

KLAPP

SKIN CARE SCIENCE



PRODUCT CATALOGUE

LEVEL UP YOUR SKIN

UNLOCKING THE SKIN'S POTENTIAL
— 45 YEARS OF INNOVATION IN
PROFESSIONAL SKINCARE

KLAPP Skin Care Science has been a pioneer in the skincare industry for 45 years, impressing with groundbreaking active ingredients and iconic products „Made in Germany“.

Our solutions are true beauty secrets, cherished by beauty experts worldwide. Over 35,000 beauty institutes and hotels in more than 60 countries trust in our expertise.

Our mission

OUR SKIN.

It is at the centre of everything we do. We invest all our expertise, experience and innovative spirit in its beautiful aesthetics.

We are devoted to creating high-quality products for the best possible skincare.

With utmost care and personal commitment, we want to make a significant contribution to beauty and well-being. We are committed to this mission with scientific expertise and over forty years of research and development in Germany.

Based on this commitment, we create skincare products that activate the skin directly. We use complex, highly effective active ingredients to stimulate and mobilise the skin's natural regenerative abilities.

At KLAPP, we call this principle Skincare Science.

We are dedicated to providing the best possible skincare with personal passion and scientific precision.

Our Purpose

We know that our skin possesses a natural regeneration system: intrinsic metabolic processes that ensure a healthy, even complexion.

We develop skincare products with highly effective, nature-inspired active ingredients that stimulate and strengthen these natural skin functions. All based on the latest scientific findings and supported by cutting-edge technologies.

Our expertise

We have made it our mission to develop the best possible skincare for our customers.

We use the latest research, our scientific expertise and all our experience to achieve this objective. We check and substantiate each of our promises of effectiveness, and we do not compromise in that endeavour! Therefore, we are confident in our quality promise based on scientific evidence, German safety standards and top performance.

We concentrate on what makes us unique. The effect of our products: precise, objective, direct. Refreshingly straightforward.

Our commitment to care

The skin is a unique sensory organ: sensitive, versatile and strong. Caring for skin requires sensitivity and affection.

That's why we listen, empathise with our customers' needs and develop solutions for the abundant challenges that skin faces every day:

Products whose effectiveness you can trust! With utmost care and passion, we invest all our efforts into the care and beauty of skin. By offering personal closeness and care, we strive to make a valuable contribution to greater self-confidence and an improved outlook on life.

Refreshingly sensual.

Our responsibility

When people entrust us with the care of their skin, they rightly expect our actions to be substantiated. At KLAPP, we have been acting responsibly for more than forty years.

We research, test and produce for our customers according to the highest quality standard: our integrity.

By unequivocally standing up for our convictions, standards and values, we secure the loyalty of our customers, partners and colleagues. That is why we are guided by the values of relevance, fairness and clarity.

Refreshingly transparent.





KAP-Technology

In our laboratories in Hessisch Lichtenau, our 'Made in Germany' cosmetic products are developed to the highest quality standards and based on scientific innovations.

They rely on an intelligent combination of science and a deep understanding of natural active ingredient principles to promote the beauty of our skin.

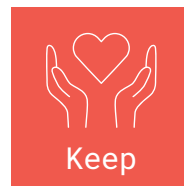
Our skin has a natural regeneration system: the skin's natural metabolic processes that help to maintain a beautiful and even complexion.

We develop products with highly effective, natural active ingredients that stimulate and support the skin's own capabilities.

Strongest performance on three levels!

Our skincare lines are formulated in three innovative ways and provide lasting care by activating the skin's natural capabilities.

For beautiful skin without compromise.



Keep

Preserves the skin's
natural valuable
substances



Activate

Activates the
skin's natural
functions

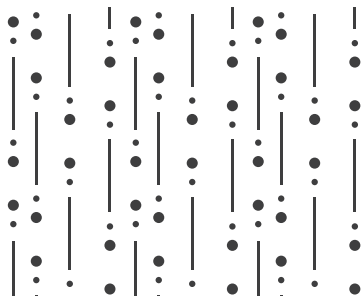


Prevent

Protects precious
components from
premature degradation

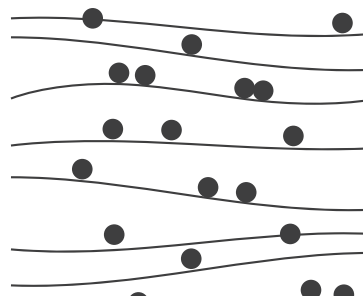
Professional solution for every skin type

PURIFY



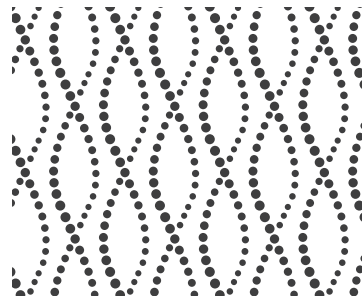
Cleanses and prepares the skin for the next steps

BALANCE



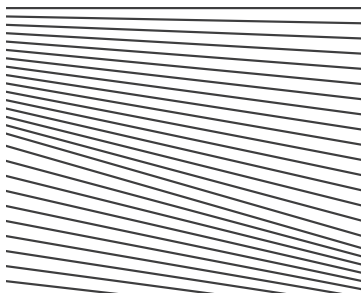
Regulates the skin's balance and restores equilibrium

RESIST AGING



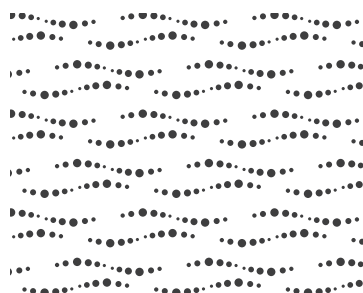
Reactivates the skin, reduces lines and wrinkles

RECHARGE



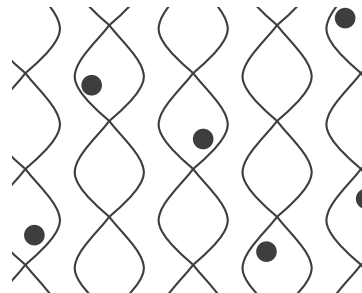
Revitalises tired and dull skin to generate an even complexion

CALM



Soothes and strengthens sensitive skin

PROTECT



Protects the skin from harmful UV rays

CONTENT

Purify
6–7

Balance
8–11

Resist Aging
12–13

Recharge
14–15

Calm
16–17

Protect
18–19

Skin Boost Ampoules
20–21

Luxury
22–23

CELL PRO
24–25

CELL PRO Body
26–27

Professional
28–31

PURIFY

Cleanses and prepares the skin for the next steps

The Cleansing Multi Level Performance line offers a range of skin type appropriate products for cleansing, toning and exfoliation that keep the skin's natural barrier balanced. The skin is cleansed deep down into the pores and perfectly prepared for subsequent care — because effective skincare starts with effective cleansing.

Cleansing

Innovative formulations for clean skin deep into the pores



Clean Beauty
100% Vegan



Cleansing Gel
200 ml | C1001*

Oily and blemished skin

Intensive cleansing experience for a soothed, refined complexion — **refreshed and intensive.**



Eye Make-up Remover
125 ml | C1009*

Particularly thorough, but gentle cleansing, also suitable for the sensitive skin around the eyes and water-resistant eye make-up.



Cleansing Milk
200 ml | C1002*

Dehydrated, dry and sensitive skin

Deep-acting cleansing and nourishing skincare in one — **gentle and intensive.**



Cleansing Foam
200 ml | Y1001

Normal to dry skin

Deep-acting cleansing with anti-pollution effect — **mild and tingling.**



Skin Perfection PHA Toner
200 ml | C1005*

Dehydrated to dry and sensitive skin

Supports natural skin regeneration — **mild and moisturising.**



Skin Perfection BHA Toner
200 ml | Y1002

Blemished, oily and combination skin

BHA promotes desquamation and clarifies the skin — **deep-acting and clarifying.**



Glow Peeling AHA + BHA
 30 ml | Y1003*
Uneven skin texture
 Promotes desquamation of the
 skin and an even complexion –
intensive and refining.

Enzyme Peeling Balm
 50 ml | C1007*
All skin requirements
 as well as sensitive skin
 Refined, even skin texture –
gentle on the skin but highly
effective.



AHA Peeling Pads
 40 pcs. | C1008
All skin requirements
 Balances out uneven skin
 appearances and softens lines –
new radiance.



BALANCE

Regulates the skin's balance and restores equilibrium

The BALANCE line regulates the skin's imbalances: The lack of moisture is balanced out and the skin regains its suppleness. Blemished skin is clarified and excessive sebum production in oily skin is regulated.

BALANCE Hyaluronic

Triple Action Moisture

Innovative skincare with a highly efficient active ingredient complex for long-lasting moisture



Clean Beauty
100% Vegan



Serum

30 ml | C4006

Fast and deep-acting moisturisation



Booster

15 ml | C4003

Increases long-lasting and effective moisture reserves.



Day + Night Cream

50 ml | C4001

Intensively hydrated skin and strengthening of the skin barrier.



Sheet Mask

3 pcs. | C4005*

Intensive hydration and plump-looking skin.



Power Trio Set

C4019

Serum 30 ml | Booster 15 ml

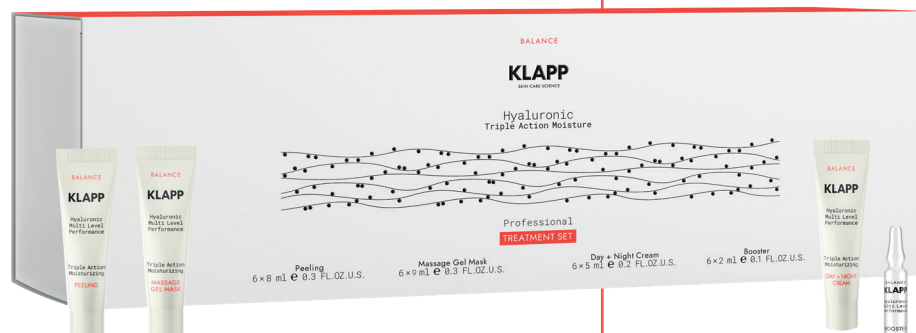
Day + Night Cream 50 ml



Eye Cream

20 ml | C4012*

Demonstrably firmer skin, visibly even and vital-looking skin around the eyes.



Treatment

6 Trt. | C4016P*

The innovative treatment activates deep-acting hydration and provides the skin with a long-lasting moisture reserve.

Day & Night Cream

50 ml | 2530

Intensively hydrating, with an opulent texture.

Mask

250 ml | 551*

Hyaluronic acid and exclusive oils for moisturising and firming the skin.



Multiple Effect

With multiple active hyaluronic acids

Colour & Care Cushion

Nourishing foundation based on hyaluronic acid with light coverage and BB cream effect

15 g each | 2560 | 2561 | 2562

(also available as a refill)

25600 | 25610 | 25620

Makes the skin appear more even, generates a feeling of comfort and provides instant moisture for a natural glow.



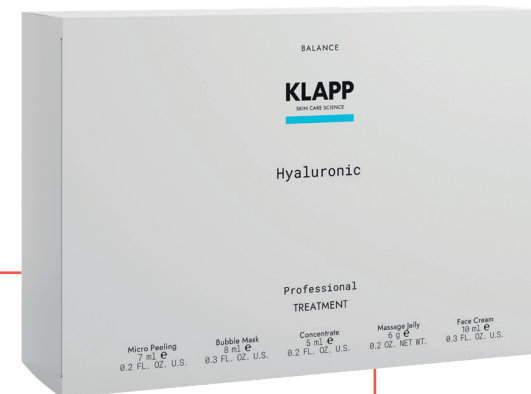
light 01



medium 02



dark 03



Treatment

533*

With multi-active hyaluronic acid for intensive moisturisation, supple skin and a smooth, radiant complexion.

BALANCE

Blemished skin

Regulates blemish-prone skin



PSC
Sebum Cleansing Tonic
125 ml | 1113*
Regulating toner
for intensive cleansing.

PSC
Active Sebum Reducer Tonic
125 ml | 1114*
Regulating toner against
blemishes and excessive
sebum flow.

PSC
Oil Free Lotion
30 ml | 1115*
Non-greasy skincare lotion
to normalise sebum production.

PSC
Clearing Sebum Mask
150 ml | 116*
Deep cleansing mask

Uneven skin appearance

Hyperpigmentation



X-Treme
Hydra Complete Cream-Gel
100 ml | 960*
Moisturising skincare
for smooth and plump skin.



X-Treme
Whitening Intensive Serum
30 ml | 1951
Reduces and evens out
pigment spots.

Dehydrated & dry skin

Balances the skin's moisture and lipid content

X-Treme Lifting Cream Day & Night

50 ml | 1958*

Regenerating cream for
a velvety smooth skin.

X-Treme Super Lipid Cream

50 ml | 1954*

Opulent cream
for very dry skin.

SkinConCellular

Moist Cream

50 ml | 2505

Moisturizing cream for particularly
dehydrated skin.

X-Treme Skin Renovator Mask

250 ml | 957*

Firming mask

X-Treme

O₂ Mask

250 ml | 963*

Stimulating cream mask
to revitalise the skin.



**X-Treme
Hyaluron Infusion Treatment
660***
Replenishes moisture reserves with
hyaluronic acid and reduces lines and wrinkles.



RESIST AGING

Reactivates the skin,
reduces lines and
wrinkles

The RESIST AGING line supports skin regeneration and gives the skin more elasticity. The first lines and wrinkles are visibly reduced, and the skin is firmer.

RESIST AGING Retinol



Clean Beauty
100% Vegan

Triple Action PRO AGE

The innovative formulation with triple retinol action for visible success against multiple signs of skin aging

Day + Night Cream

50 ml | C2001

The facial contours are tightened and wrinkle depths are corrected.

Serum

30 ml | C2002

Promotes a younger skin appearance with a natural glow — all day long.

Power Trio Set

C2018

Day + Night Cream 50 ml

Serum 30 ml

Booster 15 ml

Overnight Mask

50 ml | C2007

Supports night-time skin revitalisation and tightens the V-contour.

Booster

15 ml | C2003

Supports overnight skin revitalization and tightens the V-shaped contour.



THE NEW RETINOL - GENERATION

HPRetinoat

Hydroxypinacolone Retinoate

The highly effective, active form of retinol that works directly in the skin. Similar to retinoic acid, but without its side effects.



Treatment

6 Trt. | C2016P*

The combination of the duo massage technique and highly effective products leads to regeneration and revitalisation of the skin.



A Classic

Optimisation of skin structure and reduction of wrinkle depth with vitamin A

Revital Serum

30 ml | 1806

Regenerating serum

Eye Care Cream

15 ml | 1810*

Regenerating cream for the skin around the eyes

Micro Retinol Soft Cream

30 ml | 1825

Intensive effect in a soft texture

Cream

50 ml | 1802*

Opulent formulation

Cream Ultra

50 ml | 1809*

Light formulation

Facial Oil with Retinol

30 ml | 1804

Regenerating facial oil

Neck & Décolleté Cream

50 ml | 1803*

Sumptuous, intensive skincare

Effect Mask

50 ml | 1811*

Light gel mask with lifting effect

Power Boost Treatment

834*

Innovative all-round anti-aging treatment



RECHARGE

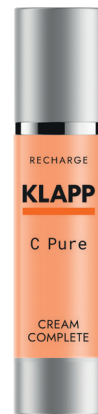
Revitalises tired and dull skin to generate an even complexion

The RECHARGE line supports the skin in its regeneration process. Tired and depleted skin is stimulated and simultaneously revitalised.

The smooth complexion is restored, and lines and wrinkles are softened. The skin regains its youthful radiance.

C Pure

Vitalises tired and dull skin for an even complexion



Cream Complete
50 ml | 1513*
Sumptuous skincare



Fluid
50 ml | 1512*
Light moisturising fluid



Face Infusion Treatment 516*
Refines and smooths the skin texture, with high-dose vitamin C

Niacinamide

Triple Action Refine

Effective facial care with high-dose niacinamides for a radiant, balanced complexion.

10% Serum
30 ml | C3102

Promotes skin elasticity and firmness, visibly reducing lines and wrinkles.

Refill Sheet Mask
10 pcs. | C3105*
Refill for sheet mask tray.

20 % Concentrate
15 ml | C3103
With zinc, helps reduce skin blemishes and redness.

Sheet Mask Tray
25 pcs. + Tray | C3106P*
Improves elasticity and provides the skin with moisture without perfume.



Stri-Pexan

The high-quality anti-wrinkle complex from Regestril™ supports the skin's natural ability to regenerate

Serpentine Serum
30 ml | 2018
Intensive serum

Eye Care
Intensivecream
20 ml | 2016
Smoothing eye cream

**Phyto Stem Cell
Technology Face Treatment**
225*
With apple stem cells to reduce
wrinkles and smooth the skin

Intensivecream
70 ml | 2015
Stimulating cream



ASA Peel®

Highly effective treatment series for skin regeneration

Products containing fruit acids exfoliate the top layer of skin. Wrinkles are effectively reduced, collagen and elastin production are increased, and skin regeneration is stimulated.

ASA Peel®
Care Cream
30 ml | 1840
Night care with fruit acid

ASA Peel®
Serum
30 ml | 1844
Fruit acid serum with
application time



ASA Peel®
Face Treatment
3 Trt. | 811*
High-dose fruit acid
treatment

Men

Anti-aging ingredients for the
skincare-conscious man

All Day Long 24H Hydro Cream
50 ml | 4361
Moisturises intensively, protects and
soothes the skin, even after shaving

Hangover Age Fight Serum
50 ml | 4362
Refreshes and smooths
stressed and tired skin.



Star Fresh Work Out Fluid
15 ml | 5102
Revitalising eye fluid to
combat dark circles and
puffiness.

CALM

Soothes and strengthens sensitive skin

The CALM line soothes sensitive skin and reinforces its resilience. The mild formulations increase well-being and prevent moisture loss.

Skin Natural

Refreshing moisturisation and protection with aloe vera

Aloe Vera Gel

50 ml | 1190

Soothing gel

Aloe Vera Cream

50 ml | 1191

24-hour cream

Aloe Vera Hydra Boost Treatment

192*

Moisturises and generates a relaxed skin appearance.

Aloe Vera Mousse Mask

50 ml | 1193

Moisturising mask

Power Set

2556

Aloe Vera Cream and ampoules

Aloe Vera Triple Action Soothing Sheet Mask

3 pcs. | C5001*

A soothing skincare experience, pleasantly refreshing and calming, with plant extracts.



Care for sensitive skin

Reduce redness and soothe irritated skin



Beta Glucan
24H Cream
50 ml | 1312*
Soft-nourishing cream

Beta Glucan
Mask
250 ml | 386*
Opulent cream mask

Beta Glucan
Skin Calming
Concentrate Ampoules
10 x 2 ml | 384*
Ampoule to soothe the skin

Immun
Couperose Serum
30 ml | 1715
Counteracts redness

Immun
Couperose Cream
30 ml | 1705
Sumptuous skincare to protect against redness.

Immun
Anti-Stress Cream Pack
50 ml | 1703*
Cream mask to strengthen irritated skin

Immun
Radical Moist Complex Gel
50 ml | 1713
Light gel emulsion with an immediate moisturising effect.

Immun
Repair Cream Concentrate
50 ml | 1708*
Opulent cream with soothing effect.

Immun
Daily Cream Protection
50 ml | 1706*
Opulent skincare for protection against redness.

Night Cream Defense
50 ml | 1707*
Moisturises dry and sensitive skin.



PROTECT

Protects the skin from harmful UV rays

The Sun Multi Level Performance products protect effectively against UVA and UVB rays with modern sun protection filters. The pleasantly light and water-resistant textures make it suitable for every day use as well as the beach.



Sun Protect

The innovative water-resistant formulation for effective, nourishing sun protection

KLAPP UVB and UVA filter system

The modern UVB and UVA filter system from KLAPP combines the best sun protection filters. There are currently no known side effects for humans or the environment. The sun protection products impress with light textures that do not leave white streaks, but are quickly absorbed by the skin and leave a natural glow.

Invisible Face & Body Glow Spray SPF 30

200 ml | Y6001

Invisible protection all year long.

Facial Sunscreen SPF 30

50 ml | C6001

Facial Sunscreen SPF 50

50 ml | C6002



Clean Beauty
100% Vegan





Facial Sunscreen BB
SPF 50
 50 ml | C6003

Sun Body Lotion
SPF 50
 200 ml | C6005

After Sun Lotion
Tan Maximizer
 200 ml | C6004
 For long-lasting tan.



Body

Body care for
 physical comfort



Cashmere Body Butter
 200 ml | 7212

Opulent body butter

The indulging texture is quickly
 absorbed and pampers the skin.

SKIN BOOST Ampoules

Scientifically based formulations,
perfectly concentrated to maximise
their efficacy, deliver long-lasting
and visible results.



SKIN BOOST Ampullen

The Essence of Beauty

Skin Boost ampoules show a noticeable effect
after the first application. Several days of use are
clearly visible on the skin. Over time, a reserve
is built up from which the skin can benefit for a
long time.

Power-Ampullen

Tailored to individual
skin requirements



Reduce

5 x 2 ml | A9007

Anti-couperose with arnica
and cypress

Illuminate

5 x 2 ml | A9008

Anti-pigmentation with fermented
rice water (sake)

Clarify

5 x 2 ml | A9009

Anti-acne with plant extracts from
Sigesbeckia Orientalis (St. Paul's
wort) & Rabbosia Rubescens

Filler

5 x 2 ml | A9010

Anti-wrinkle with Malus Domestica
(apple tree) fruit cell
culture Extract

Anti-Aging

5 x 1 ml | A9011

Overnight with plant-based
Phaseolus Lunatus (lima bean)
extract

Active ingredient ampoules

With perfectly fine-tuned ingredients



Hyaluron

5 x 2 ml | A9001

moisturises & smooths

Retinol

5 x 2 ml | A9002

restructures &
reduces wrinkles

Vitamin C

5 x 2 ml | A9003

revitalises & protects

Niacinamide

5 x 2 ml | A9004

regenerates & balances

Aloe Vera

5 x 2 ml | A9005

soothes & refreshes

Caviar

5 x 2 ml | A9006

stimulates & moisturises



LUXURY

Highly efficient active ingredients and formulations for the best results

Product lines to meet the highest demands. They combine highly effective products in an elegant design with a luxurious skin sensation.



Caviar Power

Activates the skin's regeneration processes



Age-Reducing Treatment 507*

The skin's ability to regenerate is stimulated and the skin is pampered with valuable lipids.

Imperial 24H Pearl-in-Gel White 50 ml | 2564

Improves elasticity and refines the skin texture.

Imperial Serum 40 ml | 2523

Counteracts glycation of the skin.

Imperial Serum White 40 ml | 2563

Tightens facial contours and balances skin tone.

Diamond

Preserves youthful radiance by protecting against premature skin aging

Serum

50 ml | 4050

Reduces fine lines and wrinkles.

Eye Cream

15 ml | 4053

Wrinkles and expression lines are reduced and elasticity is increased.

Face Cream

50 ml | 4054

Diamond dust and other exclusive active ingredients counteract signs of premature skin aging.

Treatment

428*

Beauty in its purest form — for skin that looks perfect.



Repagen® Exclusive

Global anti-aging with a 6-fold effect on the skin matrix



Serum

50 ml | 4308

The skin appears visibly smoother.

Age-Defying Cream

50 ml | 4306

The 5-component treatment improves skin elasticity, and the complexion looks velvety smooth and radiant.

Treatment Strong

307*

The 5-component treatment improves skin elasticity, and the complexion looks velvety smooth and radiant.

Hand Care Cream

75 ml | 4310

Luxurious, rich hand cream for soft, smooth hands.



PRO- FESSIONAL

The three CELL PRO lines – Balancing, Firming and Lifting – are specifically designed to counteract the crucial changes that occur during the skin aging process.

Exclusively available at the beauty institute.

CELL PRO

Professional facial care for timelessly youthful skin

Each line contains carefully selected blends of active ingredients that are specifically tailored to the different phases of the aging process. Together, these blends promote and maintain a youthful, uniform skin appearance.

CELL PRO Eye Cream

Anti-aging power for visibly youthful, smoother skin around the eyes

Eye Cream
20 ml | C9007

CELL PRO Balancing

High-performance skincare duo preserves visibly youthful, revitalised skin

This skincare formula was developed to protect the skin from premature aging caused by harmful blue light.

Balancing Face Cream
50 ml | C9001

Balancing Serum
30 ml | C9002





CELL PRO Firming

Innovative skincare duo supports a visibly youthful, firm complexion

This skincare duo acts as an active protective shield against the processes of skin aging. Targeted repair of the skin barrier produces a tightening effect that supports the skin's firmness.

Firming Face Cream
50 ml | C9003

Firming Serum
30 ml | C9004

**Firming Neck &
Décolleté Cream**
50 ml | C9008

CELL PRO Lifting

Highly effective skincare duo firms the skin structure for a visibly uniform complexion

By promoting the skin's natural collagen, it strengthens the skin structure and exerts a targeted effect against oxidative stress and glycation to restore the skin's elasticity and resilience.

Lifting Face Cream
50 ml | C9005

Lifting Serum
30 ml | C9006

CELL PRO Treatments

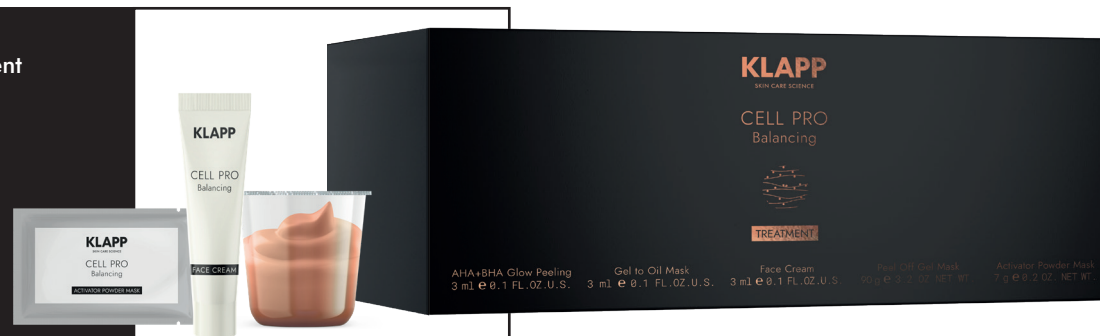
Professional treatments for timeless beauty

The three CELL PRO treatments — Balancing, Firming and Lifting — are perfectly fine-tuned blends of active ingredients that are specifically formulated for the different phases of the skin aging process.

Balancing Treatment
C9016P*

Firming Treatment
C9017P*

Lifting Treatment
C9018P*



PRO- FESSIONAL

The comprehensive body care provides a relaxing break and gently awakens the senses: Powerful active ingredients for radiant and well-maintained skin with CELL PRO Body.

Exclusively available at the beauty institute.

CELL PRO Body

Professional body care for smooth and firmer skin

The new care line offers cleansing, exfoliation, and creams with highly effective and intensely nourishing ingredients for firm and smooth skin. With its floral, delicate fragrance, it transforms daily care into a sensual escape.

Nourishing Hand Cream

50 ml | C9010

Combats dryness for soft and smooth hands.

Hydrating Hand & Body Wash

200 ml | C9011

Gently cleanses and moisturizes.

Coffee Body Scrub

200 ml | C9012

Cleanses and nourishes for soft, hydrated skin.

Age-Defying Body Lotion

200 ml | C9013

For long-lasting moisture and smooth, silky skin.

Cellulite Cream

125 ml | C9014

For a firmer skin texture and a smoother appearance.





Professional
body care for
smooth and
firmer skin.

PRO- FESSIONAL

Products for customised treatments

Device technology for the
professional business

PRODUCTS FOR CUSTOMISED TREATMENTS

SkinConCellular® Concentrate Ampoules

Energy Concentrate

10 x 2 ml | 392

Revitalises the skin.

Hydra Concentrate

10 x 2 ml | 393

Balances the moisture
content.

Push Up Concentrate

10 x 2 ml | 394

Makes the skin look
plump and firm.



Clinical Care

The Clinical Care serums were specifically designed for use with SkinShooter HC3. The highly effective active concentrates can be integrated into any treatment.

Surgery Treatment Regeneration

60+ Rebuilding Serum

4 x 6 ml | HC310

Reduces the signs of time.

Surgery Treatment Restructure

50+ Regeneration Serum

4 x 6 ml | HC306

Tightens and plumps up the skin.

Surgery Treatment Cell Boost

40+ Cell Energy Serum

4 x 6 ml | HC305

Tightens the connective tissue and
improves elasticity.



An abstract, vertical image featuring a dense collection of liquid droplets and bubbles in various sizes. The color palette is dominated by warm tones, including deep reds, burnt oranges, and soft pinks, creating a rich, textured appearance. The droplets are scattered across the frame, with some appearing as large, clear spheres and others as smaller, more delicate bubbles. The overall effect is one of organic, fluid movement.

Exfoliants are effective tools to treat various skin issues even without medical help. They help reduce sun damage, lighten pigmentation spots, and soften superficial acne scars.

Whitening
40 ml | HC533

Acne
5x8 ml | HC530

Couperose
40 ml | HC531



5 x 10 ml | 846

Fragrance-free serum with hyaluronic acid and amino acid complex. Specifically designed for needling application.

Highly efficient serums with Dermican. The peptide promotes collagen synthesis and elasticity.



High and low molecular weight
hyaluronic acid hydrate the skin.

Stem Cell Serum
2 x 30 ml | 172
Apple stem cells counteract
the signs of skin aging.

Collagen Serum
2 x 30 ml | 173
Marine collagen improves
firmness and elasticity.

Beta-glucan soothes and moisturises sensitive skin.

Anti-Wrinkle Serum
2 x 30 ml | 175
 Sodium PCA increases the skin's ability to bind moisture. The highly concentrated Dermican improves skin firmness.

Acne Regulation Serum
2 x 30 ml | 176
 Plant extracts, *Sigesbekia*
Orientalis and *Rabdosia*
Rubescens have a balancing
 effect on blemished skin

PRO- FESSIONAL

TECHNOLOGY FOR THE PROFESSIONAL BUSINESS

Free of
non-ionising
radiation
according to
NISV



Professional Micro-Needling

D7001

Safe and targeted perforation of the skin surface using ultra-fine MESO tips – for comprehensive skin texture improvement. The skin is restructured from the inside out – precisely, gently and painlessly.

Plastic needles
10 pcs. | D7002

Steel needles
10 pcs. | D7003

HYDRA Revival

D7007

Multifunctional technology for optimizing and rejuvenating the skin. Unique with patented handpieces featuring a flow regulator. Attachments made of plastic, silicone, and diamond, spray handpiece, and O2 Cellpulser for the use of the four KLAPP Liquids.

No. 1
CLEAR - Cleansing Hydra Liquid
500 ml | D7008

No. 2
SCRUB - Peeling Hydra Liquid
500 ml | D7009

No. 3
DETOX - Detox Hydra Liquid
500 ml | D7010

No. 4
XGLOW - Nurturing Hydra Liquid
500 ml | D7011

No. 5
Cleansing Hydra Liquid
500 ml | D7012



TECHNIQUE FOR THE PROFESSIONAL BUSINESS

Skin Analysis Accessoires

Sebum Paper
50 pcs. | 2044

Keratin Tape
50 pcs. | 2045



Free of
non-ionising
radiation
according to
NiSV

AQUA Derm+ Liquids

Collagen Serum
125 ml | 184

Supports the skin's natural collagen production and promotes a firmer skin structure.

Hyaluron Serum
125 ml | 185

Increases the skin's moisture reserve and helps smooth fine lines.

Vitamin Serum
125 ml | 187

Revitalizes the complexion and promotes a radiant complexion.

Peeling Serum
125 ml | 952

Intense yet gentle exfoliating effect, stimulates skin renewal.

Technical Clearing
125 ml | 953

Cleansing solution for the AQUA DERM+ DEVICE.





KLAPP

SKIN CARE SCIENCE

Contact us

KLAPP Cosmetics GmbH

Klapp-Allee 1-5
37235 Hessisch Lichtenau
Germany

+49 5602 93590
info@klapp-skincare.com

klapp-skincare.com

